

HYDRAULIKSEILBAGGER

Liebherr HS8070.1 - 263224



ALLGEMEINE DATEN

- Baujahr: 2022
- Leistung (ISO 9249): 320 kW
- Gewicht: ca. 72.000 kg
- Bodendruck: 0,9 kg/cm²
- Schallpegel 2000/14/EG (außen): 107 dB(A)

AUSSTATTUNG

- Bodenplatten 800 mm
- Unterwagen hydraulisch teleskopierbar
- Hauptwinde 2x 20 t mit Freifall, drehungsfreies Hubseil 90 m, drehungsfreies Hubseil, 150 m Seildurchmesser 30 mm
- Seilgeschwindigkeit mit Leerhaken 0-90 m/min
- Frontscheibe schutzverglast BR6-NS gemäß DIN-EN 1063
- 1x Ausleger-Anlenkstück 5,5 m mit Laufsteg, 1x Ausleger Zwischenstück 3 m mit Laufsteg, 5x Ausleger Zwischenstück 6 m mit Laufsteg, 1x Ausleger Kopfstück 5,5 m
- Einfachhaken 20 t, Hakenflasche 40 t
- Sensibler Hub
- Dredge Assist
- Beruhigungswinde

- 2-Seil Unterwassergreifer, schwenkbar 1725 mm, 3,5 m³
- Anwendungspaket Verrohrungsmaschine
- 10" Materialcontainer

SICHERHEITSSYSTEME

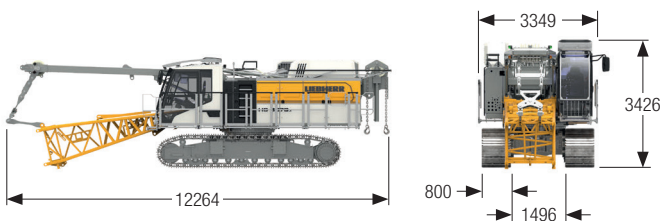
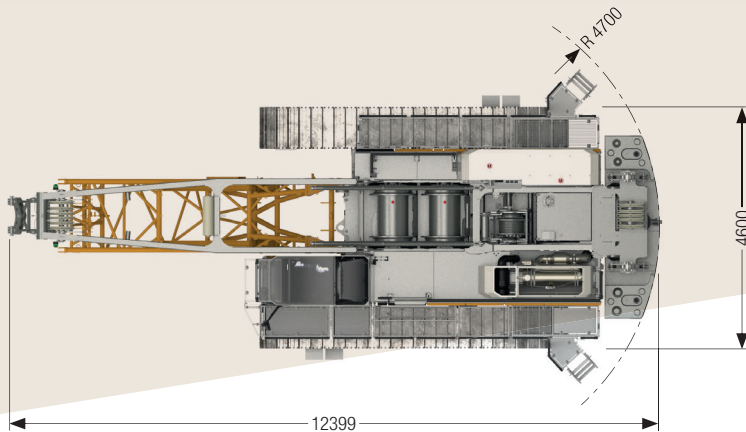
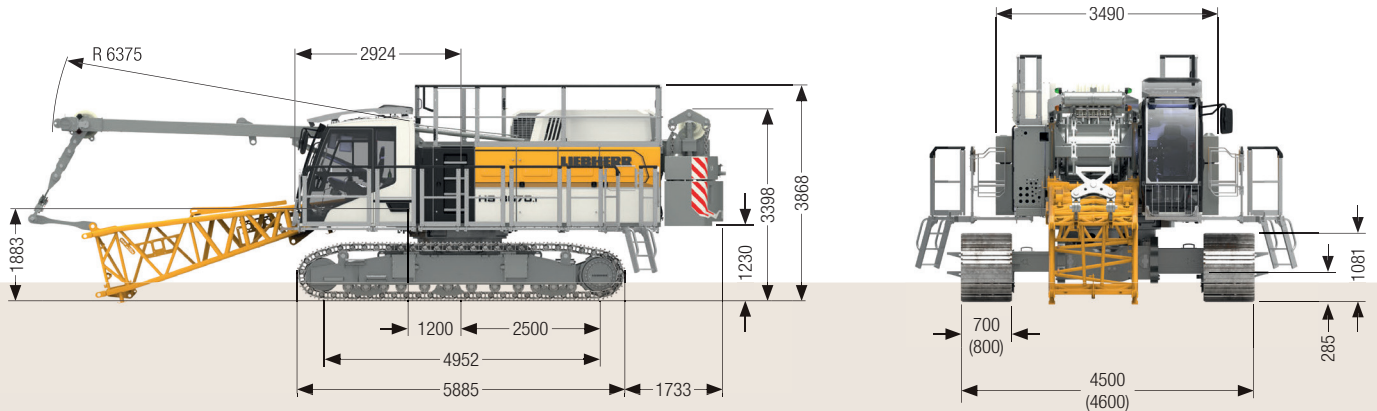
- Kamera zur Front-, Rück-, Seitenraum- und Windenüberwachung
- Windmesser
- Dachgeländer, beidseitige Laufstege
- Helileuchte
- Zusatzwarnlampen für das Drehen des Oberwagens
- Litronic Notbetriebssteuerung

EINSATZGEBIET

Hubarbeiten, Wasserbau, Großbohrungen, Verdachtspunktbergung

TECHNISCHE DATEN

GRUNDGERÄT MIT UNTERWAGEN, RAUPENTRÄGER NICHT ABNEHMBAR

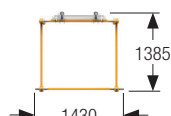
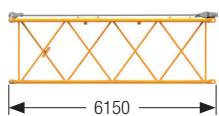
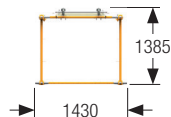
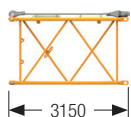


TRANSPORTABMESSUNGEN

Breite mit 800 mm 3-Steg-Bodenplatten 3400 mm
 Gewicht mit 800 mm 3-Steg-Bodenplatten 46800 kg

ZWISCHENSTÜCK 3M

Breite 1430 mm
 Gewicht mit 900 mm Flachbodenplatten 8300 kg
 Gewicht inklusive Halteseile 525 kg



ZWISCHENSTÜCK 6M

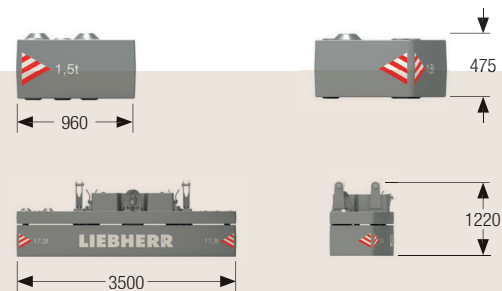
Breite 1430 mm
 Gewicht inklusive Halteseile 880 kg



TECHNISCHE DATEN

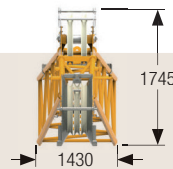
BALLASTPLATTE (2x Standard, optional 6x)

Breite 850 mm
Gewicht 1500 kg



AUSLEGERKOPF

Breite 1430 mm
Gewicht 2120 kg

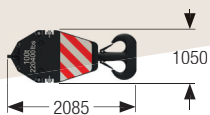


BALLASTPLATTE (1x)

Breite 1050 mm
Gewicht 17330 kg

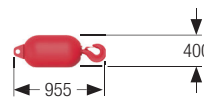
40T HAKENFLASCHE – 1 ROLLE

Breite 260 mm
Gewicht 970 kg



20T HAKENFLASCHE – 1 ROLLE

Breite 400 mm
Gewicht 400 kg





TECHNISCHE DATEN

TRAGLASTEN IM GREIFERBETRIEB

Traglasten in [t] mit 20.3 t Ballast

	Auslegerlänge [m]							
	11	14	17	20	23	26	29	32
6					30.3	30.3	30.3	30.3
7		29.5	29.6	29.1	28.6	27.7	27.2	26.8
8	24.2	24.3	24.3	24.3	24.3	24.0	23.3	22.4
9	20.4	20.5	20.5	20.5	20.5	20.4	20.2	19.4
10	17.6	17.7	17.7	17.7	17.6	17.6	17.4	16.8
11	15.3	15.5	15.5	15.5	15.4	15.4	15.3	14.7
12	13.5	13.7	13.7	13.7	13.7	13.6	13.5	13.1
13		12.2	12.3	12.2	12.2	12.1	12.0	11.9
14		11.0	11.1	11.0	11.0	10.9	10.8	10.7
15		9.9	10.0	10.0	10.0	9.9	9.8	9.7
16			9.1	9.1	9.1	9.0	8.9	8.8
17			8.3	8.3	8.3	8.2	8.1	8.0
18			7.6	7.7	7.6	7.6	7.5	7.4
19				7.1	7.0	7.0	6.9	6.8
20				6.5	6.5	6.4	6.4	6.3
21				6.0	6.0	6.0	5.9	5.8
22					5.6	5.5	5.4	5.3
23					5.2	5.1	5.1	5.0
24						4.8	4.7	4.6
25						4.4	4.4	4.3
26						4.1	4.1	4.0
27							3.8	3.7
28							3.5	3.5
29							3.3	3.2
30								3.0
31								2.8
32								2.6

TLT 13164865 M253330 - v2

Berechnung der Standsicherheit nach DIN EN 474-12. Die Traglasten überschreiten nicht 66% der Kipplast.

Die max. Traglast mit mechanischem Greifer beträgt 20 t. Für höhere Traglasten ist ein Hydraulikgreifer erforderlich.

TECHNISCHE DATEN

TRAGLASTEN HEBEINSATZ

Hauptausleger-Konfiguration

Auslegerstück	Anzahl der Auslegerstücke														
	1	1	1	1	1	1	1	1	1	1	1	1	1	1	1
Anlenkstück 5.5 m	1	1	1	1	1	1	1	1	1	1	1	1	1	1	1
Zwischenstück 3 m		1		1		1		1		1		1		1	
Zwischenstück 6 m			1	1	2	2	3	3	4	4	5	5	6	6	
Auslegerkopf 5.5 m	1	1	1	1	1	1	1	1	1	1	1	1	1	1	1
Auslegerlänge [m]	11	14	17	20	23	26	29	32	35	38	41	44	47	50	
Spitzenausleger	✓	✓	✓	✓	✓	✓	✓	✓	✓	✓	✓	✓	✓	✓	✓

bevorzugte Auslegerkombination

TRAGLASTEN HEBEINSATZ

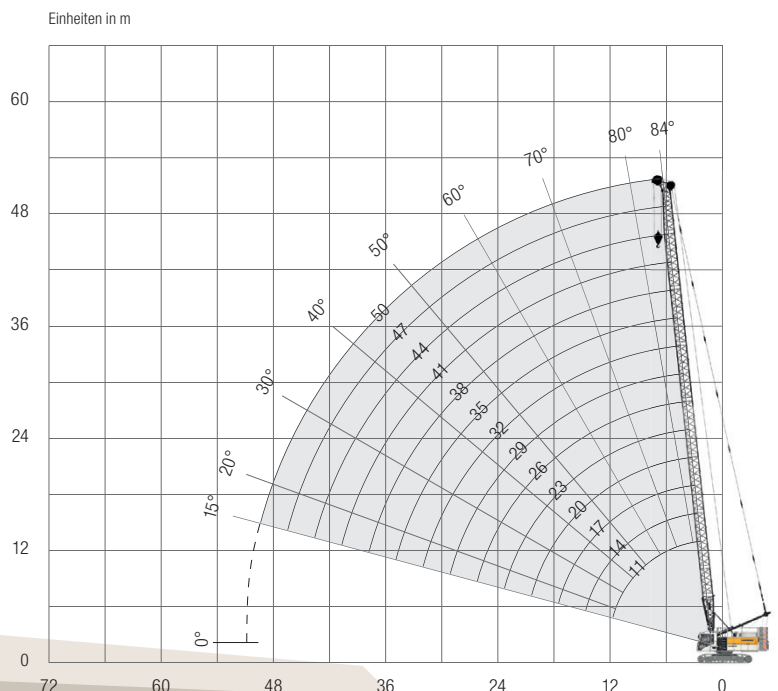
Traglasten in [t]

Radius [m]	Auslegerlänge [m]															
	11				14				17				20			
	17.3	20.3	23.3	29.3	17.3	20.3	23.3	29.3	17.3	20.3	23.3	29.3	17.3	20.3	23.3	29.3
3			70.0													
4			70.0				69.6		61.4		70.0		57.6		70.0	
5	52.0		64.4		49.2		63.8		46.6		59.5		44.3		57.6	
6	40.9		53.5		39.1		51.3		37.4		48.9		35.8	39.0	46.8	
7	32.4		43.1		32.3	35.2	42.9		31.1	33.9	41.3		29.8	32.6	39.4	39.4
8	26.6	29.0	35.5	39.8	26.7	29.1	35.6	36.8	26.5	28.9	35.2	35.2	25.5	27.9	33.8	33.8
9	22.4	24.4	30.0	34.1	22.5	24.5	30.1	32.8	22.5	24.6	30.1	30.6	22.2	24.3	29.4	29.4
10	19.2	21.0	25.8	29.5	19.3	21.1	26.0	29.6	19.3	21.2	26.0	27.5	19.3	21.1	25.9	25.9
11	16.7	18.3	22.6	25.8	16.8	18.5	22.8	26.0	16.9	18.5	22.8	25.2	16.8	18.4	22.7	23.5
12	14.6	14.6	14.6	14.6	14.8	16.3	20.2	23.1	14.9	16.4	20.2	23.1	14.8	16.3	20.2	21.7
13					13.3	14.6	18.1	20.7	13.4	14.6	18.1	20.8	13.3	14.6	18.1	20.2
14					11.9	13.1	16.3	18.7	12.0	13.2	16.4	18.8	12.0	13.2	16.3	18.7
15					10.7	11.8	14.6	14.6	10.9	12.0	14.9	17.1	10.8	11.9	14.8	17.1
16									9.9	10.9	13.7	15.6	9.8	10.9	13.6	15.6
17									9.0	9.9	12.5	14.5	8.9	9.9	12.5	14.4
18									8.2	9.1	11.5	13.3	8.2	9.1	11.5	13.3
19													7.5	8.4	10.6	12.3
20													6.9	7.7	9.8	11.5
21													6.3	7.1	9.1	10.6

TLT 13164863 M253330 - v7

- Heckballast in [t]
- + 15.3t Zentralballast
- Max. Traglast

HAUPTAUSLEGER 84° BIS 15°





TECHNISCHE DATEN

TRAGLASTEN HEBEINSATZ

Traglasten in [t]

		Auslegerlänge [m]																				
		23				26				29				32				35				
Radius [m]		17.3	20.3	23.3	29.3	17.3	20.3	23.3	29.3	17.3	20.3	23.3	29.3	17.3	20.3	23.3	29.3	17.3	20.3	23.3	29.3	
	5		42.1		55.1		40.0		52.6		38.1	41.6	48.4									
6		34.2	37.3	44.5		32.8	35.8	42.9	42.9	31.4	34.3	41.3	41.3	30.1	32.9	39.2	39.2	28.9	31.6	37.7	37.7	
7		28.7	31.3	37.9	37.9	27.6	30.1	36.1	36.1	26.5	29	34.6	34.6	25.5	27.9	33.3	33.3	24.6	26.9	31.8	31.8	
8		24.6	26.9	32.2	32.2	23.7	25.9	31.1	31.1	22.8	25.0	30.0	30.0	22.0	24.2	28.8	28.8	21.2	23.3	27.7	27.7	
9		21.4	23.5	28.4	28.4	20.7	22.7	27.2	27.2	20.0	21.9	26.3	26.3	19.3	21.2	25.3	25.3	18.6	20.5	24.3	24.3	
10		18.9	20.7	25.0	25.0	18.3	20.1	24.2	24.2	17.7	19.4	23.2	23.2	17.1	18.8	22.3	22.3	16.5	18.2	21.6	21.6	
11		16.7	18.4	22.4	22.4	16.3	17.9	21.7	21.7	15.8	17.4	21.0	21.0	15.2	16.8	20.1	20.1	14.7	16.2	19.4	19.4	
12		14.8	16.2	20.1	20.4	14.6	16.1	19.6	19.6	14.3	15.6	19.0	19.0	13.8	15.1	18.3	18.3	13.3	14.6	17.6	17.6	
13		13.3	14.6	18.0	19.0	13.2	14.5	17.9	17.9	12.9	14.3	17.3	17.3	12.5	13.8	16.7	16.7	12.1	13.4	16.2	16.2	
14		11.9	13.1	16.2	17.8	11.8	13.0	16.1	16.7	11.7	12.9	15.9	15.9	11.4	12.6	15.3	15.3	11.0	12.2	14.8	14.8	
15		10.7	11.9	14.8	16.7	10.6	11.8	14.6	15.7	10.5	11.6	14.6	14.8	10.4	11.5	14.3	14.3	10.0	11.1	13.7	13.7	
16		9.8	10.8	13.6	15.6	9.6	10.7	13.5	14.8	9.5	10.6	13.3	14.0	9.4	10.4	13.1	13.1	9.2	10.2	12.6	12.6	
17		8.9	9.9	12.5	14.4	8.8	9.7	12.3	14.0	8.7	9.6	12.2	13.2	8.5	9.5	12.1	12.4	8.4	9.4	11.8	11.8	
18		8.1	9.0	11.5	13.3	8.0	8.9	11.4	13.2	7.9	8.8	11.3	12.5	7.8	8.7	11.1	11.7	7.6	8.6	10.9	11.1	
19		7.5	8.3	10.6	12.3	7.4	8.2	10.5	12.2	7.2	8.1	10.4	11.9	7.1	8.0	10.3	11.1	7.0	7.8	10.1	10.5	
20		6.9	7.7	9.8	11.4	6.8	7.6	9.7	11.3	6.7	7.5	9.6	11.2	6.5	7.3	9.5	10.6	6.4	7.2	9.4	10.0	
21		6.3	7.1	9.1	10.7	6.2	7.0	9.0	10.6	6.1	6.9	8.9	10.4	6.0	6.7	8.8	10.1	5.9	6.6	8.7	9.5	
22		5.8	6.6	8.5	10.0	5.7	6.5	8.4	9.9	5.6	6.4	8.3	9.7	5.5	6.2	8.2	9.6	5.4	6.1	8.0	9.1	
23		5.4	6.1	7.9	9.3	5.3	6.0	7.8	9.2	5.2	5.9	7.7	9.1	5.1	5.8	7.6	8.9	4.9	5.6	7.5	8.7	
24						4.9	5.5	7.3	8.6	4.8	5.5	7.2	8.5	4.7	5.3	7.1	8.3	4.5	5.2	7.0	8.2	
25						4.5	5.1	6.8	8.1	4.4	5.1	6.8	8.0	4.3	4.9	6.6	7.8	4.2	4.8	6.5	7.7	
26						4.2	4.8	6.4	7.6	4.1	4.7	6.3	7.5	4.0	4.6	6.2	7.3	3.8	4.4	6.1	7.2	
27										3.8	4.4	5.9	7.1	3.7	4.2	5.8	6.9	3.5	4.1	5.7	6.8	
28										3.5	4.0	5.5	6.7	3.4	3.9	5.4	6.5	3.2	3.8	5.3	6.4	
29										3.2	3.7	5.2	6.3	3.1	3.6	5.1	6.1	3.0	3.5	5.0	6.0	
30														2.8	3.4	4.7	5.8	2.7	3.3	4.6	5.6	
31														2.6	3.1	4.4	5.4	2.5	3.0	4.3	5.3	
32														2.4	2.9	4.2	5.1	2.3	2.8	4.1	5.0	
33																		2.1	2.5	3.8	4.7	
34																		2.0	2.3	3.5	4.5	
35																			2.1	3.3	4.2	

TLT 13164863 M253330 - v7





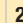


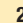

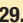
Heckballast in [t]

+ 15.3t Zentralballast

TECHNISCHE DATEN

TRAGLASTEN HEBEINSATZ

Traglasten in [t]

		Auslegerlänge [m]																
		38				41				44				47			50	
		17.3	20.3	23.3 	29.3 	17.3	20.3	23.3 	29.3 	17.3	20.3	23.3 	29.3 	20.3	23.3 	29.3 	23.3 	29.3 
6	27.7	30.3	34.2	34.2														
7	23.6	25.9	30.2	30.2	22.7	25.0	29.0	29.0	21.9	24.1	27.7	27.7	23.2	25.1	25.1			
8	20.5	22.5	26.6	26.6	19.7	21.7	25.6	25.6	19.0	20.9	24.1	24.1	20.2	23.1	23.1	22.1	22.1	
9	18.0	19.8	23.2	23.2	17.3	19.1	22.3	22.3	16.7	18.4	21.5	21.5	17.8	20.6	20.6	19.5	19.5	
10	15.9	17.6	20.9	20.9	15.3	17.0	19.9	19.9	14.8	16.4	19.1	19.1	15.8	18.4	18.4	17.6	17.6	
11	14.3	15.7	18.7	18.7	13.8	15.2	18.1	18.1	13.4	14.7	17.3	17.3	14.3	16.5	16.5	15.8	15.8	
12	12.9	14.3	16.9	16.9	12.4	13.8	16.4	16.4	12.0	13.3	15.8	15.8	12.9	15.2	15.2	14.4	14.4	
13	11.6	12.9	15.5	15.5	11.2	12.5	14.9	14.9	10.8	12.1	14.5	14.5	11.6	13.8	13.8	13.3	13.3	
14	10.6	11.8	14.5	14.5	10.2	11.4	13.8	13.8	9.8	11.0	13.1	13.1	10.6	12.7	12.7	12.2	12.2	
15	9.6	10.8	13.2	13.2	9.3	10.4	12.7	12.7	8.9	10.0	12.1	12.1	9.6	11.6	11.6	11.1	11.1	
16	8.8	9.9	12.2	12.2	8.5	9.5	11.8	11.8	8.1	9.2	11.3	11.3	8.8	10.8	10.8	10.3	10.3	
17	8.1	9.1	11.3	11.3	7.7	8.7	10.9	10.9	7.4	8.4	10.5	10.5	8.1	10.1	10.1	9.5	9.5	
18	7.4	8.4	10.5	10.5	7.1	8.0	10.1	10.1	6.8	7.7	9.7	9.7	7.4	9.4	9.4	8.9	8.9	
19	6.8	7.7	9.9	9.9	6.5	7.4	9.4	9.4	6.2	7.1	9.0	9.0	6.8	8.7	8.7	8.3	8.3	
20	6.2	7.0	9.1	9.4	6.0	6.8	8.9	8.9	5.7	6.5	8.4	8.4	6.2	8.1	8.1	7.7	7.7	
21	5.7	6.5	8.5	8.9	5.5	6.3	8.3	8.4	5.2	6.0	7.9	7.9	5.7	7.5	7.5	7.1	7.1	
22	5.2	5.9	7.9	8.5	5.1	5.8	7.7	8.0	4.8	5.6	7.5	7.5	5.2	7.1	7.1	6.7	6.7	
23	4.8	5.5	7.3	8.1	4.6	5.3	7.2	7.6	4.4	5.1	6.9	7.1	4.8	6.7	6.7	6.2	6.2	
24	4.4	5.0	6.8	7.8	4.2	4.9	6.7	7.3	4.0	4.7	6.4	6.8	4.5	6.3	6.3	5.9	5.9	
25	4.0	4.7	6.3	7.4	3.9	4.5	6.2	7.0	3.7	4.4	6.0	6.5	4.1	5.8	6.0	5.5	5.5	
26	3.7	4.3	5.9	7.1	3.5	4.2	5.8	6.7	3.4	4.0	5.6	6.2	3.8	5.4	5.7	5.1	5.3	
27	3.4	4.0	5.5	6.6	3.2	3.8	5.4	6.4	3.1	3.7	5.2	5.9	3.5	5.1	5.5	4.8	5.0	
28	3.1	3.7	5.1	6.2	3.0	3.5	5.0	6.1	2.8	3.4	4.8	5.7	3.2	4.7	5.2	4.5	4.8	
29	2.8	3.4	4.8	5.8	2.7	3.2	4.7	5.7	2.5	3.1	4.5	5.5	2.9	4.4	5.0	4.2	4.5	
30	2.6	3.1	4.5	5.5	2.4	3.0	4.4	5.3	2.3	2.8	4.2	5.2	2.6	4.0	4.8	3.9	4.3	
31	2.4	2.9	4.2	5.1	2.2	2.7	4.1	5.0	2.1	2.6	3.9	4.8	2.4	3.7	4.6	3.6	4.1	
32	2.1	2.6	3.9	4.8	2.0	2.5	3.8	4.7	2.0	2.3	3.6	4.5	2.2	3.5	4.4	3.3	3.9	
33	2.0	2.4	3.7	4.6		2.3	3.5	4.4		2.1	3.4	4.2		3.2	4.1	3.0	3.8	
34		2.2	3.4	4.3		2.1	3.3	4.1			3.1	4.0		3.0	3.8	2.8	3.6	
35			3.2	4.1			3.0	3.9			2.9	3.7		2.7	3.6	2.6	3.4	
36			3.0	3.8			2.8	3.7			2.7	3.5		2.5	3.3	2.4	3.2	
37			2.7	3.6			2.6	3.5			2.5	3.2		2.3	3.1	2.2	2.9	
38			2.5	3.3			2.4	3.2			2.3	3.1		2.1	2.9		2.7	
39							2.2	3.0			2.1	2.9			2.7		2.5	
40							2.1	2.8				2.7			2.5		2.3	
41								2.6				2.5			2.3		2.1	
42												2.3			2.2			
43												2.1			2.0			
44												2.0						

TLT 13164863 M253330 - v7

 Heckballast in [t]

 + 15.3t Zentralballast