

HYDROGRAPHIC SURVEYS

APPLICATIONS



- **Pre-site surveys**
- **Bathymetric charts**
- **Volume calculations**
- **Scour monitoring**
- **Monitoring of underwater constructions**

HYDROACOUSTICS

Sound propagation in water provides important information to explore unknown areas of the seafloor.

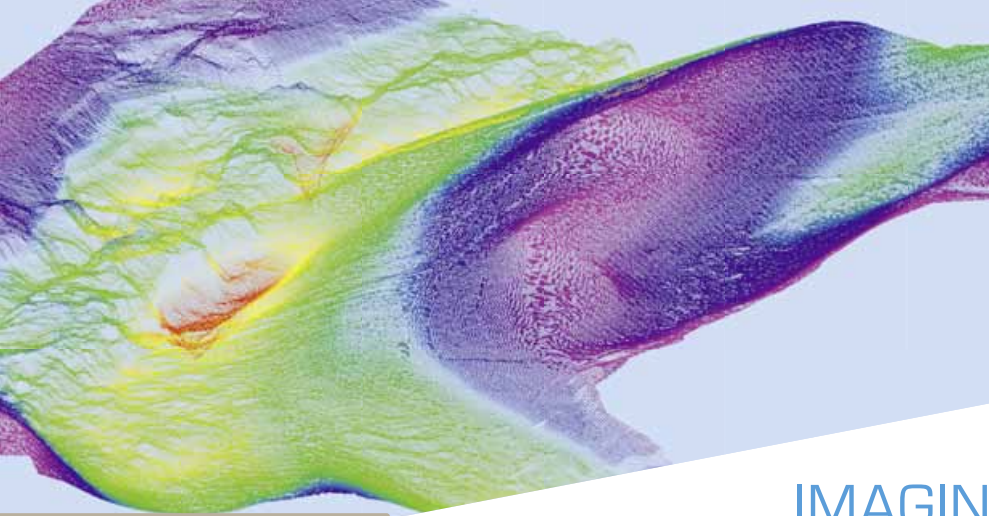


KAMPFMITTELBERGUNG

- ☎ Telefon: +49 (0)4109 2799-156
- ✉ info@eggers-kampfmittelbergung.de
- 🌐 www.eggers-kampfmittelbergung.de



KAMPFMITTELBERGUNG

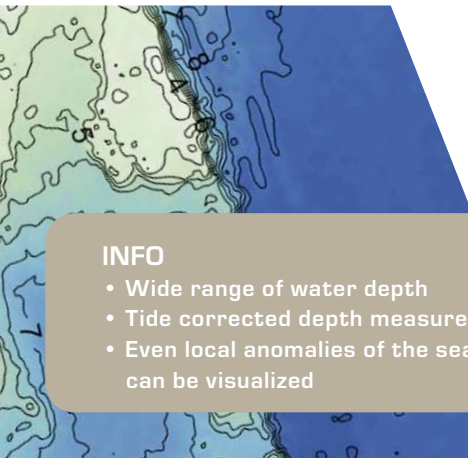


ECHO SOUNDER

SEAFLOOR DETECTION

Acoustic methods like single- or multi beam sonars are used to create bathymetric maps. Thereby travel time from acoustic waves reflected by the seafloor is converted into depth measurements. In combination with positioning devices (GPS, motion sensor, etc.) georeferenced depth charts can be created.

High resolution, three-dimensional point clouds provide detailed images of the seafloor. For UXO detection these data are useful pre-site information (obstacles, slope areas, etc.) so the height over ground of magnetometers can be adapted in advance.



INFO

- Wide range of water depth
- Tide corrected depth measurements
- Even local anomalies of the seafloor can be visualized

IMAGING SONAR

Imaging or scanning sonars allow structural investigations at quay walls or piers. By using high resolution sonars and variable operating frequencies even small scale deformations or damages at buildings can be detected at an early stage.

Precise close-up views

Furthermore they allow detailed investigation of potentially hazardous objects even in poor visibility.

The scan shows a 500 lbs Bomb in the Baltic Sea

